

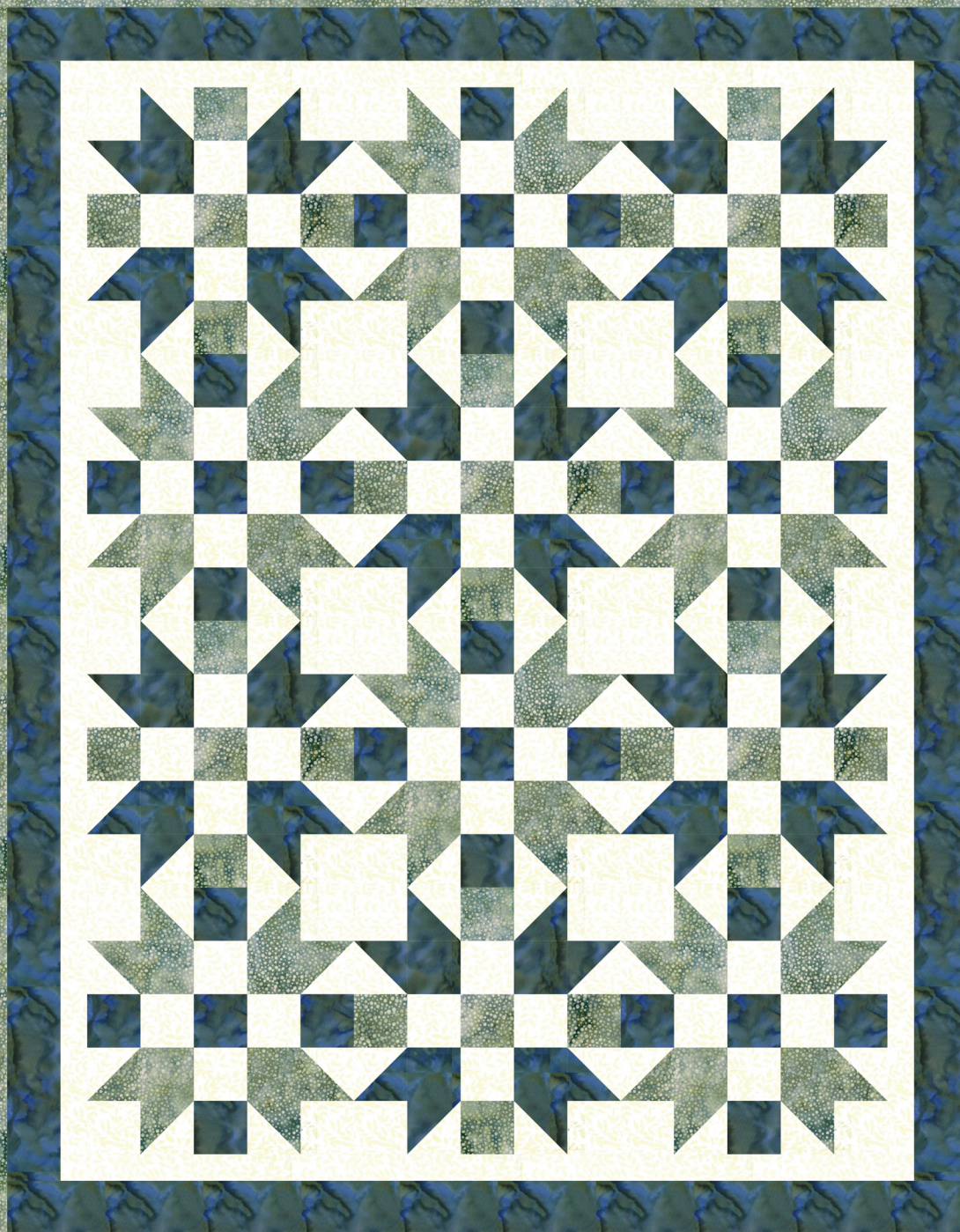
# 3YD Papa

Digital Download

Quilt Pattern, 42" x 52"



*Material  
Girlfriends*



DIGITAL DOWNLOAD. ONE COPY PER PURCHASE.

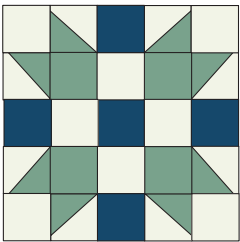


# 3YD Papa

Quilt Pattern, 42" x 52"

**Read ALL instructions before beginning.** The blocks are 10" Finished Size.  
All seams are sewn with a ¼" seam allowance with fabric right sides together.

**3YD Papa** is created by making a total of twelve **Father's Choice** blocks, six blocks in each of the two colorways. The **Father's Choice** quilt block is a classic, versatile design that has been cherished by quilters for decades. Originally published in *The Quiltmaker's Handbook: A Guide to Design and Construction* by Michael James in 1978, this block features a striking geometric layout that lends itself well to a variety of quilting styles.



**Father's Choice Block**  
**Colorway A**  
10 ½" Unfinished Size

## Cutting Instructions

**From the Light fabric cut:**

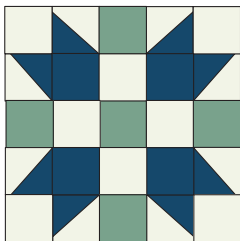
- Four strips 3" x WOF, sub-cut into forty-eight 3" squares for the **Half Square Triangles**
- Three strips 2 ½" x WOF, sub-cut one strip in **HALF** at the fold for the **Two-Patch Units**
- Three strips 2 ½" x WOF, sub-cut into forty-eight 2 ½" squares for the **Corner Units**
- Four strips 1 ½" x WOF for the **Light Inner Border**

**From the Medium fabric cut:**

- Six strips 3" x WOF for the **Medium Outer Border**
- Two strips 3" x WOF, sub-cut into twenty-four 3" squares for the **Half Square Triangles**
- Two strips 2 ½" x WOF, sub-cut one strip in **HALF** at the fold for the **Two-Patch Units**
- Two strips 2 ½" x WOF, sub-cut into thirty 2 ½" squares for the **Corner Units**

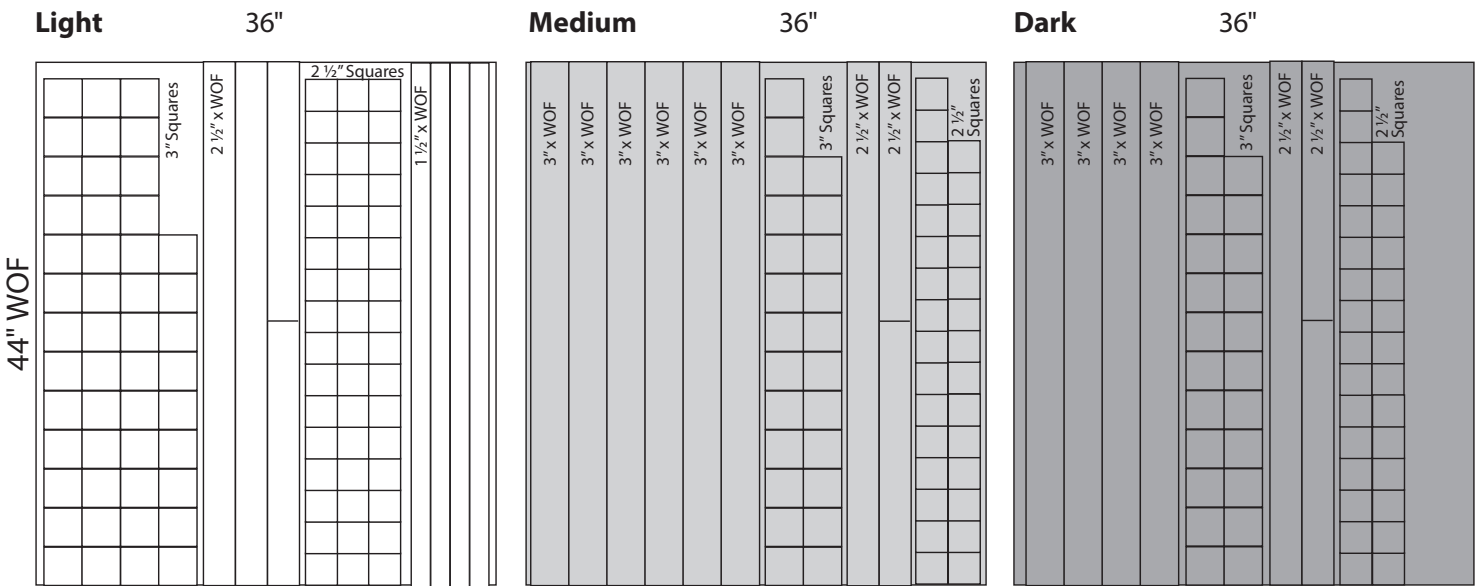
**From the Dark fabric cut:**

- Four strips 3" x WOF for the **Dark Middle Border**
- Two strips 3" x WOF, sub-cut into twenty-four 3" squares for the **Half Square Triangles**
- Two strips 2 ½" x WOF, sub-cut one strip in **HALF** at the fold for the **Two-Patch Units**
- Two strips 2 ½" x WOF, sub-cut into thirty 2 ½" squares for the **Corner Units**



**Father's Choice Block**  
**Colorway B**  
10 ½" Unfinished Size

To make this a 3-yard quilt pattern, the cutting is tight! Below is a cutting map for your reference. Cut strips in the order listed above. *For left-handed quilters, cut from the right, largest units first.*

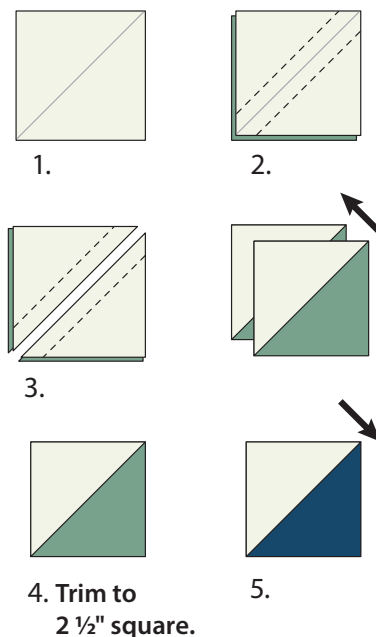


## Father's Choice Block Construction

You'll be making 96 **Half Square Triangles**. *You can do it!* Make two at a time using the method described below. Each set of triangles will be made with a **Light** square.

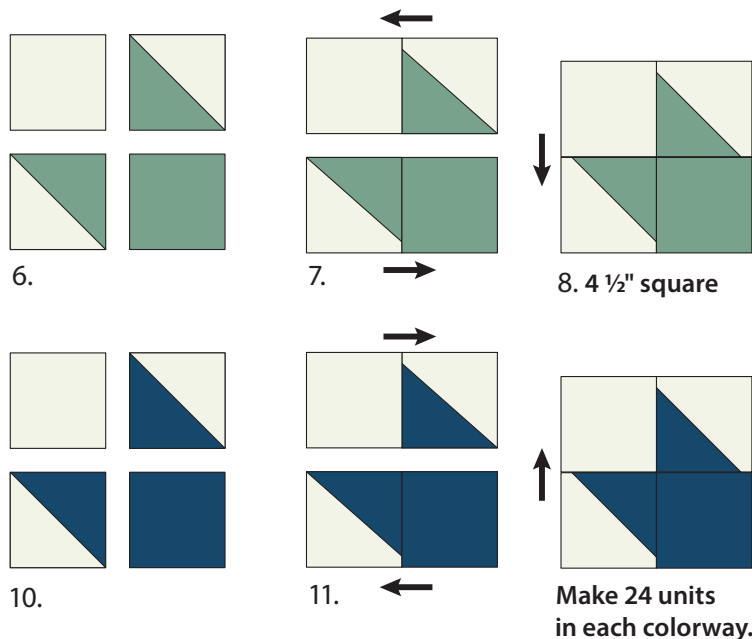
### Half Square Triangles

1. To create the **Half Square Triangles (HSTs)**, draw a diagonal line across the wrong side of all the 3" **Light** squares.
2. Pair a 3" **Light** Square with a 3" **Medium** square. With right sides together, sew a  $\frac{1}{4}$ " seam on each side of the drawn line.
3. Cut on the drawn line to create two **HSTs**. Press the seam as the arrow indicates.
4. Repeat to make a total of forty-eight **Light/Medium HSTs**. **TRIM** your HSTs by lining up the seam with the 45° line on your ruler. **Trim to 2 ½" square**.
5. Repeat the process to make forty-eight **Light/Dark HSTs**. *Nice job!*



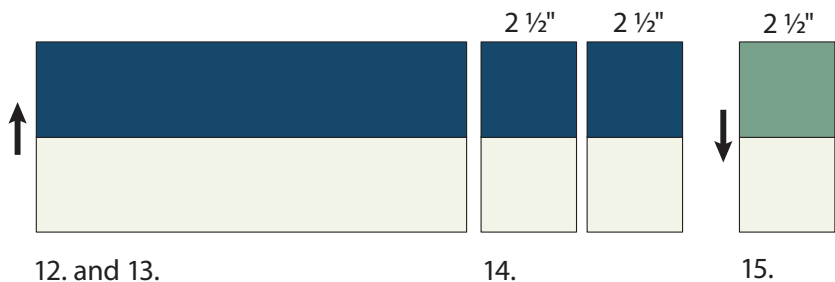
### Corner Units

6. Arrange two **Light/Medium HSTs**, one **Medium 2 ½" square**, and one **Light 2 ½" square** like the diagram.
7. Align and sew the top two squares together. Align and sew the bottom two squares together. Press the seams as the arrows indicate.
8. Nest the seam, pin, and sew the top portion to the bottom. Press the seam as the arrow indicates. The **Corner unit** should measure 4 ½" square.
9. Make a total of twenty-four **Light/Medium Corner units**.
10. Repeat the process to make twenty-four **Light/Dark Corner units**.
11. Press all the seams for the **Light/Dark Corner units** in the opposite direction as the **Light/Medium Corner units**.



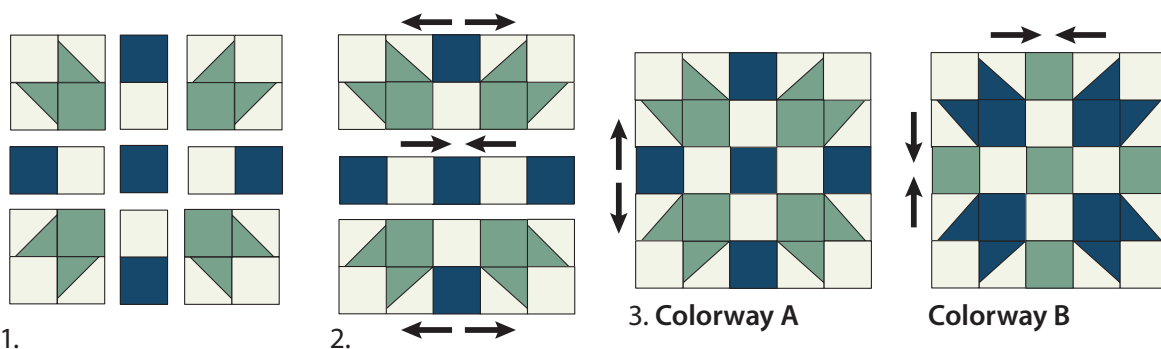
### Two-Patch Units

12. Align, pin, and sew a **Dark 2 ½" x WOF strip** to a **Light 2 ½" x WOF strip**. Press the seam as the arrow indicates.
13. Align, pin, and sew the **Dark 2 ½" HALF strip** to a **Light 2 ½" HALF strip**. Press the seam as the arrow indicates.
14. Sub-cut both strip sets into twenty-four 2 ½" units. The **Two-Patch unit** should measure 2 ½" x 4 ½".
15. Repeat the process to make twenty-four **Light/Medium Two-Patch units**.



## Block Assembly

1. Arrange the **Light/Medium Corner units**, **Two-Patch units**, and a center **2 1/2" Dark square** as in the diagram.



2. Nest seams, pin, and sew the top three units together. Sew the middle units together. Nest seams, pin, and sew the bottom three units together. Press the seams as the arrows indicate.
3. Nest seams, pin, and sew the top unit to the middle unit. Nest seams, pin, and sew the bottom unit to the middle unit. Press seams as the arrows indicate. Make six blocks in **Colorway A** and six blocks in **Colorway B**. Press all the seams for **Colorway B** in the opposite direction than **Colorway A**. Blocks should measure 10 1/2" square.

4. Arrange the blocks like the diagram.
5. Align seams, pin, and sew the blocks together in the first row. Press seams to the right. Align seams, pin, and sew the second row together. Press seams to the left. Continue in the same manner until all the rows are sewn.

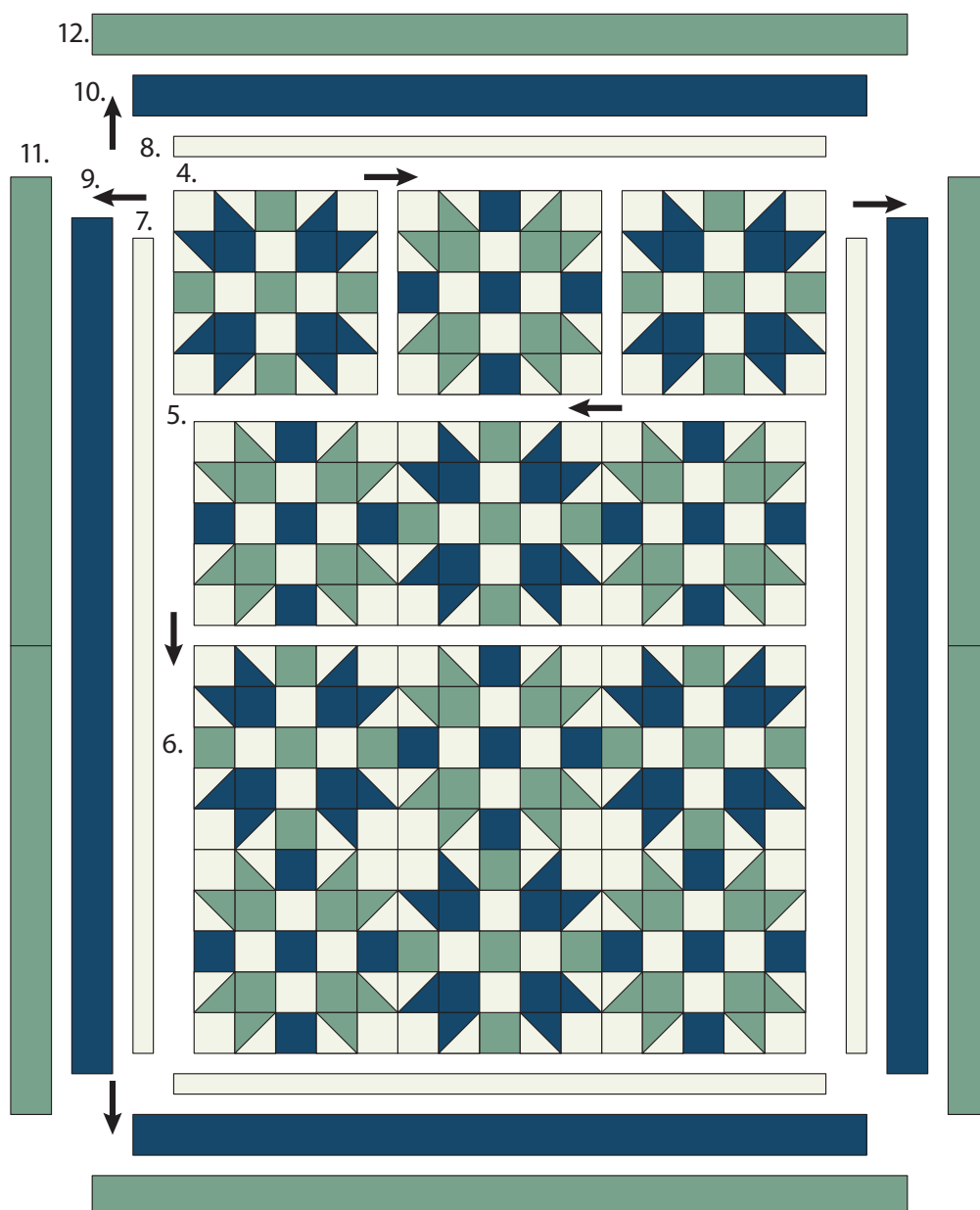
6. Nest seams, pin, and sew the rows together. Press seams in one direction. The quilt top should measure 30 1/2" x 40 1/2".

## Quilt Top Assembly

### Light Inner Border

7. Press the quilt top well before adding the borders (hot iron but no steam).

**Measure the length** of the left and right sides of your quilt top. In a perfect quilter's world, the measurement would be 40 1/2". If the sides of your quilt top are different, average the measurements. Trim selvage and trim two





**Light Inner Border** strips to that measurement (40 ½"). Pin the strip at the ends and middle, then pin, and ease any differences. Sew to the left and right sides of the quilt top. Press the seams toward the border.

8. **Measure the width** of the top and bottom of your quilt top. In a perfect quilter's world, the measurement would be 32 ½". If the sides of your quilt top differ, average the measurements. Trim selvage and trim two **Light Inner Border** strips to that measurement (32 ½"). Pin the strip at the ends and middle first, then pin and ease any differences. Sew to the top and bottom of your quilt top. Press seams toward the border. The quilt top should measure 32 ½" x 42 ½".

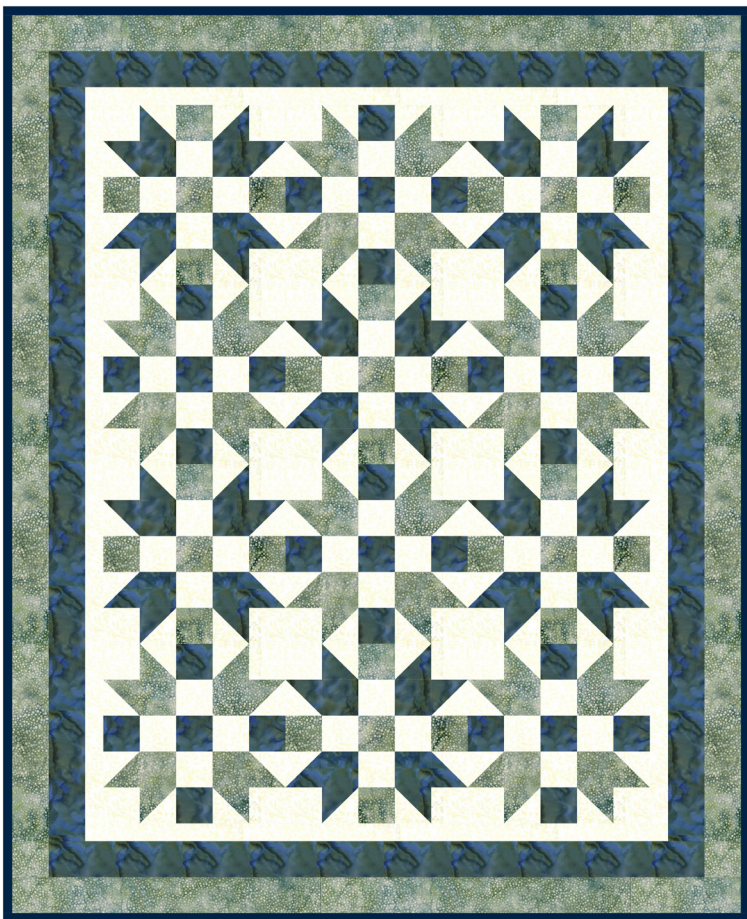
#### **Dark Middle Border**

9. Repeat the process to add the 3" **Dark Middle Border**. Measure, trim selvage, and cut two **Dark Middle Border** strips to your measurement (42 ½" in a quilter's perfect world). Pin, and sew to the left and right sides.
10. Measure, trim selvage, and cut two 3" **Dark Middle Border** strips to your measurement (37 ½" in a quilter's perfect world). Pin and sew the strips to the top and bottom. Press seams toward the border. Quilt top should measure 37 ½" x 47 ½".

#### **Medium Outer Border**

11. Trim selvages from the **Medium Outer Border** 3" x WOF strips. Sew two of these strips end-to-end and press the seam to one side. Repeat to make two long strips. Measure your quilt top. With the seam in the center, trim to your measurement (47 ½" in a quilter's perfect world). Align, pin, and sew to the left and right sides of the quilt top. Press the seams toward the Outer Border.
12. Measure, trim selvage, and cut two 3" **Medium Outer Border** strips to your measurement (42 ½" in a quilter's perfect world). Pin and sew the strips to the top and bottom. Press seams toward the Outer Border. Quilt top should measure 42 ½" x 52 ½".

*Great job! Quilt, bind, and enjoy!*



# 3YD Papa

## Quilt Pattern

42" x 52"

Welcome to the THREE YARD QUILT series by Material Girlfriends! Choose three fabrics, light, medium, and dark (one yard of each) to make the fun quilts in this series! All are 'Throw' size; great for a baby quilt, a reading quilt for a child (or adult), over a chair or sofa, or a gift for a loved one.

Look for the 3YD quilt patterns Alpha, Bravo, Charlie, and so on.

The clear and detailed cutting and sewing diagrams make the block assembly quick and easy!

**To make this a 3-yard quilt pattern, the cutting is tight!** The pattern includes a cutting map for your reference. Purchase additional Light and Medium yardage ( $\frac{1}{8}$  yard) if you're prone to miscuts.

## Fabric Requirements

42  $\frac{1}{2}$ " of useable width of fabric required

1 YD of Dark fabric

1 YD of Medium fabric

1 YD of Light fabric

**Backing:** 3 YDs

**Batting:** 50" x 60" minimum size

**Binding:**  $\frac{1}{2}$  YD



Let's Connect!



Facebook: @materialgirlfriends13



Pinterest: Material Girlfriends Patterns



Instagram: material\_girlfriends



YouTube: Material Girlfriends Patterns



Twitter: @heylianorton

www.MaterialGirlfriends.com

© 2025 Lisa Norton Designs, LLC dba Material Girlfriends Patterns. All Rights Reserved. Pieced by Lora W. Zmak and Lisa W. Norton. Quilted by Lora W. Zmak. Finished item for personal use only. No portion of this pattern may be reproduced including photocopying, except for personal use. A basic knowledge of quilting is assumed. Therefore, detailed instructions are not included. Material Girlfriends Patterns cannot be held responsible for variants in workmanship and materials. Every effort has been made to make the pattern error-free. However, mistakes occasionally happen. Please check [www.MaterialGirlfriends.com](http://www.MaterialGirlfriends.com) Corrections page for any edits. materialgirlfriend@yahoo.com | MG110

3YDP

MSRP \$8.99

**PDF DOWNLOAD**  
NOT FOR  
REPRODUCTION OR RESALE.  
ONE COPY PER PURCHASE.