

Bona Fide



*Material
Girlfriends*



DIGITAL DOWNLOAD. ONE COPY PER PURCHASE.

6 Month - Block of the Month Quilt Pattern

Bona Fide

Six Month Block of the Month Quilt Pattern

This Six Month BOM quilt design was inspired by Studio 37 Fabrics, **Soulful Shades Collection** designed by Laura Berringer. Love, love, love this fabric line!

Read all instructions before beginning.

Tip: Spray starch and press all wrinkles out of your fabric before cutting. Be sure to have on your pretty glasses and good lighting for better accuracy!

Another Tip: Keep your pieces and blocks organized by placing in individual zip baggies. To help remind you which star the pieces are for, write the name of the block on the baggie.

Just one more: Download a convenient swatch sheet from www.QuiltPatternsDirect.com/blog. It can help tremendously especially if you're are not using the Soulful Shades fabrics.



Month One Blocks - Month one begins with making two blocks.

The one in the upper left and lower right are the same pattern, just different color placement. The star is called **Robbing Peter to Pay Paul** and was first seen in the *Ladies Art Company*, in 1897. The block is also known as **Arizona**, by Nancy Page in *Birmingham News*, July 7, 1936.¹ This beautiful block looks lovely in an endless combination of colors and textures. Fussy cut the center blocks to feature fabric details!

Month Two Blocks - The upper right and the lower left stars are called **Memory**. And, who wouldn't want a few blocks of Memory? This block was first recorded in *Practical Needlework*, 1906 by Clara Stone.¹ By changing the color combinations, this block has so much versatility!

Month Three Blocks - Get ready to make four **Irish Chain Sawtooth** blocks! The colors will be the same for all four blocks. These give the quilt stability and serve to anchor the design.

Month Four Block - This month create the center block, assemble the inner quilt top, and add the inner sashing. The center block is called, **Diamond Cut**. Pay close attention to color placement to achieve the light and dark reflections of the diamond.

Month Five - Put together the units for the pieced border. Piece twenty **Corner Square Triangles** and eight **Irish Chain** blocks.

Month Six - Last month! You're almost done. Appliqué the blocks for all four sides and sew together the pieced border. Sew on the outer border and it is ready for quilting, binding, and a label.

Not necessary but products to love for this BOM:

- Star Singles 2" Half Square Triangle Paper
- Bloc Loc Flying Geese Ruler - 2" x 4"
- Bloc Loc Half Square Triangle Ruler - 2 ½" square
- ½ yard double sided fusible web
- 12mm bias tape maker
- Coordinating threads for Appliqué

¹ *The Quilter's Album of Patchwork Patterns* by Jinny Beyer ©2009. Published by Breckling Press. Page 140-2, "Robbing Peter to Pay Paul". Page 136-4, "Memory".

Fabric Chart for **Bona Fide BOM**

Month 1, Blocks A & B

Month 2, Blocks B & C

Month 3, Irish Chain Sawtooth Blocks

Month 4, Block E and Inner Border

Month 5, Pieced Border

Month 6, Appliqué, Outer Border, and Binding

Save extra fabrics from the previous months for Appliqué!



0526-1026
Blocks A, B, C, D, Outer
Border and Appliqué
1 ½ yards



0531-1042
Background for Blocks
A, B, C, D, E, and Irish
Chain Sawtooth Blocks
1 ¼ yards



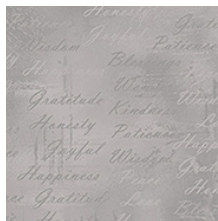
0532-1059
Irish Chain Blocks,
Background for Pieced
Border and Appliqué
1 yards



0527-1044
Block A, E, and Appliqué
1/4 yard



0527-1024
Block B, E, and Appliqué
¼ yard



0528-1070
Blocks A, B, and
Pieced Border ¼ yard



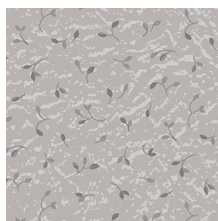
0528-1031
Blocks A, B, C, D, E, and
Irish Chain Sawtooth
Blocks ½ yard



0528-1043
Blocks B, C, D, and
Appliqué ¼ yard



0532-1043
Irish Chain Blocks and
Appliqué ½ yard



0531-1045
Blocks C, D, and
Appliqué ¼ yard



0532-1026
Blocks C, E, and Irish
Chain Sawtooth Blocks
½ yard



0556-1025
Inner Border and
Binding
¾ yard

Block of the Month Program

If you are receiving your fabrics monthly from a shop, you can expect to receive the following.
Save extra fabric for following months.

Month 1:

0531-1042 *Fat Quarter*
0526-1026 *Fat Quarter*
0527-1024 *Fat Eighth*
0527-1044 *Fat Eighth*
0528-1043 *Fat Eighth*
0528-1031 *Fat Eighth*
0528-1070 9" x 12"

Month 2:

0531-1042 *Fat Quarter*
0531-1045 *Fat Quarter*
0528-1043 *Fat Eighth*
0528-1031 *Fat Eighth*
0532-1026 6" square
(0526-1026 received in Month 1)

Month 3:

0531-1042 ⅝ yard
0532-1059 12" square
0532-1026 12" x 22"
0528-1031 *Fat Eighth*
0532-1043 ⅙ yard

Month 4:

0531-1042 *Fat Eighth*
0532-1026 12" square
0532-1059 12" square
0528-1031 *Fat Eighth*
0527-1024 *Fat Eighth*
0527-1044 *Fat Eighth*
0556-1025 ¼ yard

Month 5:

0532-1059 20" x WOF
0528-1070 9" x 32"
0532-1043 ⅙ yard

Month 6:

0532-1059 16" x 22"
0526-1026 1 ¼ yards
0556-1025 ½ yard





Bona Fide

Six Month

Block of the Month Quilt Pattern

Fabrics used in the quilt sample are from Marcus Brother Fabrics, Soulful Shades Collection designed by Laura Berringer. Finished Size 54" x 54"



1 ½ yards 0526-1026
*Allows plenty for
Border and to fussy
cut block centers*



1 ¼ yards 0531-1042
Background for blocks



1 yard 0532-1059
*Background for pieced
border and appliqué*



1/3 yard 0532-1026
for blocks



¾ yard 0556-1025
*total (¼ yard for
inner border, ½ yard
for binding)*



½ yard 0528-1031
for blocks



¼ yard 0528-1070
for blocks



1/3 yard 0532-1043
for blocks



¼ yard 0528-1043
for blocks



¼ yard 0531-1045
for blocks



¼ yard 0527-1044
for blocks



¼ yard 0527-1024
for blocks

3 ½ yards Backing

Optional for Appliqué

1/2 yard double sided fusible web
12mm bias tape maker
Coordinating threads

© 2016, 2019 Lisa Norton Designs, LLC dba Material Girlfriends Patterns. All Rights Reserved. Pieced by Lisa W. Norton, Lora W. Zmak, and Carolyn Wooldridge. Quilted by Lora W. Zmak. Finished item for personal use only. No portion of this pattern may be reproduced including photo-copying. A basic knowledge of quilting is assumed, therefore detailed instructions are not included. Material Girlfriends Patterns can not be held responsible for variants in workmanship and materials. Every effort has been made to make the pattern error free. However, mistakes occasionally happen. Please check www.QuiltPatternsDirect.com/blog Corrections page for any edits. www.materialgirlfriends.com | materialgirlfriend@yahoo.com | MG18.5

A heart felt **THANK YOU** to the Material Girlfriends Testing/Proofing Team for Bona Fide: Jennie Castner, Georgette Fuetren, Diana & Doris Garnhart, Dianne Maragnio, Katheline Monnier, and Judy White. You ladies are a priceless part of our quilting enjoyment!



MSRP \$20.99

PDF DOWNLOAD
NOT FOR
REPRODUCTION OR RESALE.
ONE COPY PER PURCHASE.