

Lovely Weather For Ducks

20" Quilted Pillow Pattern





November 9, 2020

Hi there!

Thank you for participating in the Mondays with Marcus promotion. We're delighted to offer you this free pillow pattern, **Lovely Weather for Ducks**. Want a kit for this pretty project? Be sure to visit and check out other patterns by Material Girlfriends at

www.MaterialGirlfriendsShop.com

Lovely Weather for Ducks pillow was created to coordinate and compliment our new Block of the Month pattern **Willow Lake**. **Willow Lake** is a sampler style quilt pattern which includes piecing, foundation piecing, and appliqué. Both projects are made with the *Material Girlfriends Collection R06 Primo Batiks* by Marcus Fabrics.

Need a little help? Check out the **Lovely Weather for Ducks** tutorial at www.MaterialGirlfriends.com

Happy Sewing!

Lisa W. Norton & Lora W. Zmak

Lovely Weather For Ducks Kit Requirements

Fabrics are from the Material Girlfriends Collection R06 Primo Batiks by Marcus Fabrics.



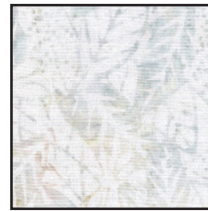
Forest Green
R062315-0112
6" x 8" Rectangle
Appliqué #s 10, 11, 14,
15, 16,



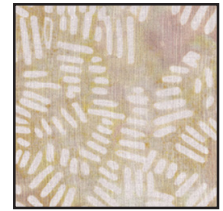
Harvest Gold
R062340-0113
4" Square
Appliqué #s 4, 7, 12, 13



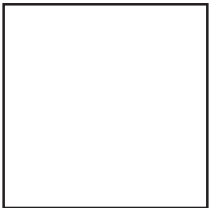
Golden Green Leaves
R062362-0116
5" x 7" Rectangle
Appliqué # 17



Light Gray Leaves
R062362-0146
7" x 5" Rectangle
Appliqué # 2



Tan Hatch Marks
R062351-0146
4" x 3" Rectangle
Appliqué #s 6, 8



Solid White Marshmallow
C835901-0733
8" x 4" Rectangle
Appliqué #s 1, 3, 9



Golden Brown
R062315-0113
3 1/2" x 13 1/2" Rectangle
Appliqué # 5



Watery Blue Gray
R062339-0143
1/4 yard



Dark Blue Leaves
R062362-0110
9" x 22"



Tan with Blue Flowers
R062352-0147
3/4 yard block border
and backing

© 2020 Lisa W. Norton and Lora W. Zmak of Material Girlfriends Patterns. All Rights Reserved. Finished item for personal use only. No portion of this pattern may be reproduced including photocopying. A basic knowledge of quilting is assumed, therefore detailed instructions are not included. Material Girlfriends Patterns can not be held responsible for variants in workmanship and materials. Every effort has been made to make the pattern error free. However, mistakes occasionally happen. Please check www.QuiltPatternsDirect.com/blog Corrections page for any edits. | www.materialgirlfriends.com | materialgirlfriend@yahoo.com | MG00.3

PDF DOWNLOAD
NOT FOR
REPRODUCTION
OR RESALE

Half Square Triangle (HST) Units and Background Assembly Instructions

Use a 1/4" seam allowance for all piecing; fabric right sides together.

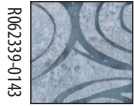
Unfinished HST Size 2 1/2", Finished HST Size 2" Square. **Read all instructions before starting.**



Two 6 1/4" square for **HST/8x**



One 2 1/2" x 12 1/2" rectangle for background

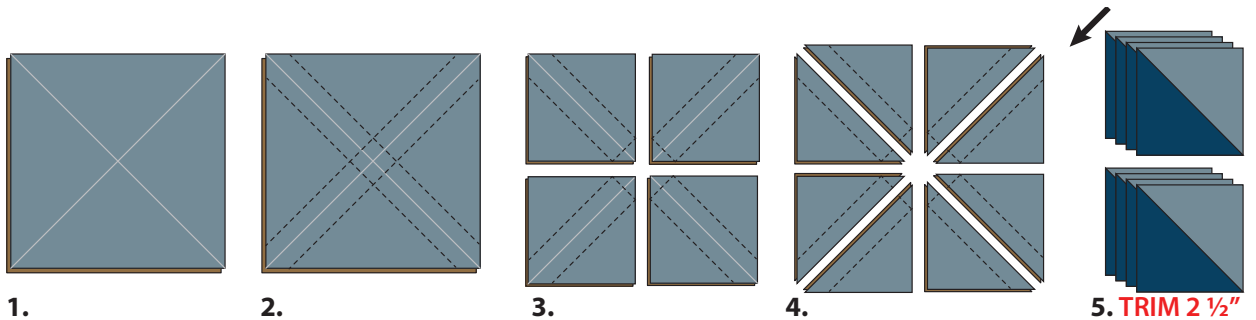


Two 6 1/4" square for **HST/8x**
One 6 1/2" x 12 1/2" for background
(Be sure your puddles are horizontal and not vertical!)



Eight-at-a-Time Method (8x) to Make Half Square Triangles (HST)

1. With one 6 1/4" square from each of the fabrics called out for the HSTs. Draw a diagonal line from corner to corner in both directions on the wrong side of the lighter fabric.



2. With right sides together, sew 1/4" seam on both sides of the drawn lines.

3. Cut vertically and horizontally at the center 3 1/8" mark.

4. Cut on the diagonal drawn lines.

5. Press the seam toward the darker fabric. **Align the 45° line of your ruler along the seam and trim to 2 1/2" square.** Snip off the dog ears. Repeat to make another set of eight **HST**. You'll have four **HST** left over so you can choose your best results for the next steps.

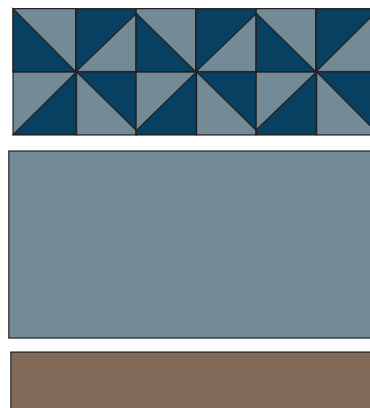
6. Arrange four **HSTs** like diagram 6.

7. Sew the top two **HSTs** together. Sew the bottom two **HSTs** together. Press the seams as the arrows indicate.

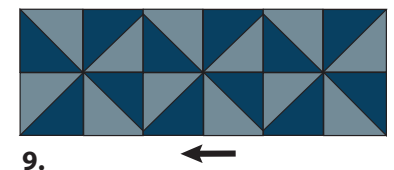
8. Nest seam, pin, and sew the top and bottom halves together to create a **Pinwheel** block. Press as arrow indicates. Block should measure 4 1/2". Repeat the steps above to make a total of three **Pinwheel** blocks.

9. Arrange the three **Pinwheel** blocks like the diagram. Nest seam, pin, and sew the three blocks together. Press the seams in one direction. Unit should measure 12 1/2" x 4 1/2".

10. Align, pin, and sew the background pieces together like the diagram. Press seams as indicated by the arrow. Block should measure 12 1/2" square.



10.

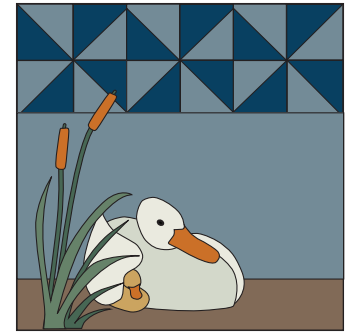


9.

Appliqué Instructions

Appliqué templates are for the raw edge fusible appliqué method. If using a different method, add seam allowance as needed. Visit www.MaterialGirlfriends.com for video tutorials.

1. Prepare your appliqué pieces using the reversed templates on page 4. Refer to page 1 for appliqué fabric colors.
2. For the positioning sheet, align and tape pages 5 and 6 together.
3. Appliqué the pieces in numeric order to the background. The eye is TINY. Consider embroidery or fabric paint if too small to appliqué. If using a fusible appliqué method, finish the raw edges with a blanket or small zigzag stitch in coordinating threads. If hand appliqué or another method is used, add seam allowance to the appliqué pieces in the amount needed. When the appliqué and top stitching are completed, press well.

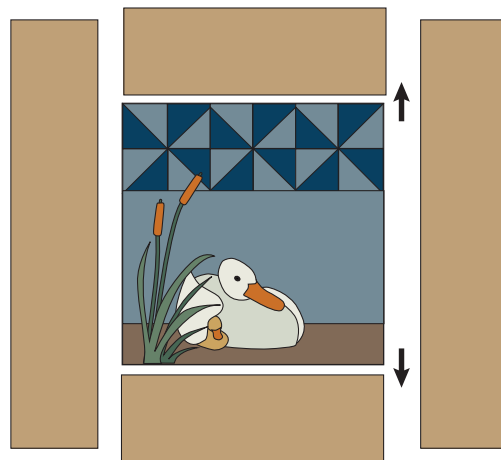


20" Pillow Case Instructions



Two 15 1/2" x 20 1/2" rectangles for back of pillow
 Two 4 1/2" x 20 1/2" rectangles for left and right sides
 Two 4 1/2" x 12 1/2" rectangles for top and bottom

1. Pin and sew the 4 1/2" x 12 1/2" sashing to the top and bottom of the appliqué block. Press as the arrows indicate.



1.

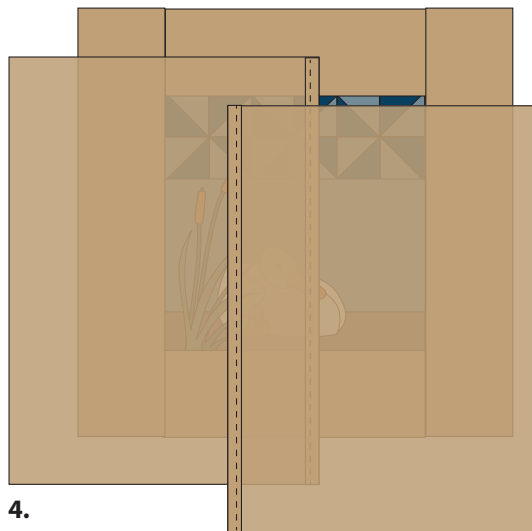
2. Pin and sew the 4 1/2" x 20 1/2" sashing to the left and right sides of the pillow top. Press as the arrows indicate.



2.

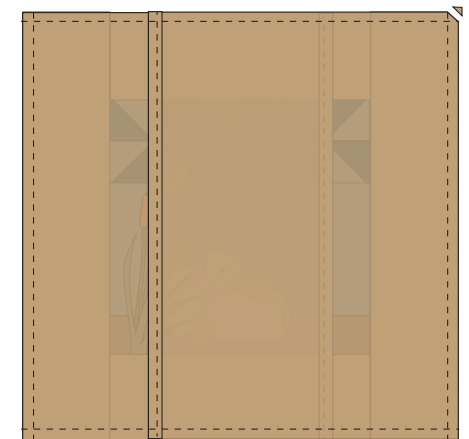
3. Sandwich with a 23" muslin backing and 23" square of batting. Quilt as desired. Trim excess batting and muslin from pillow top.

4. To create the envelope style pillow back, measure the width of your quilted pillow top. Quilting can shrink the top a little. Cut two rectangles 15" x the measurement (Will likely be less than 20 1/2"). Finish one of the 15 1/2" edges by rolling under a 1/4" twice and hem in place. Repeat for the other rectangle.



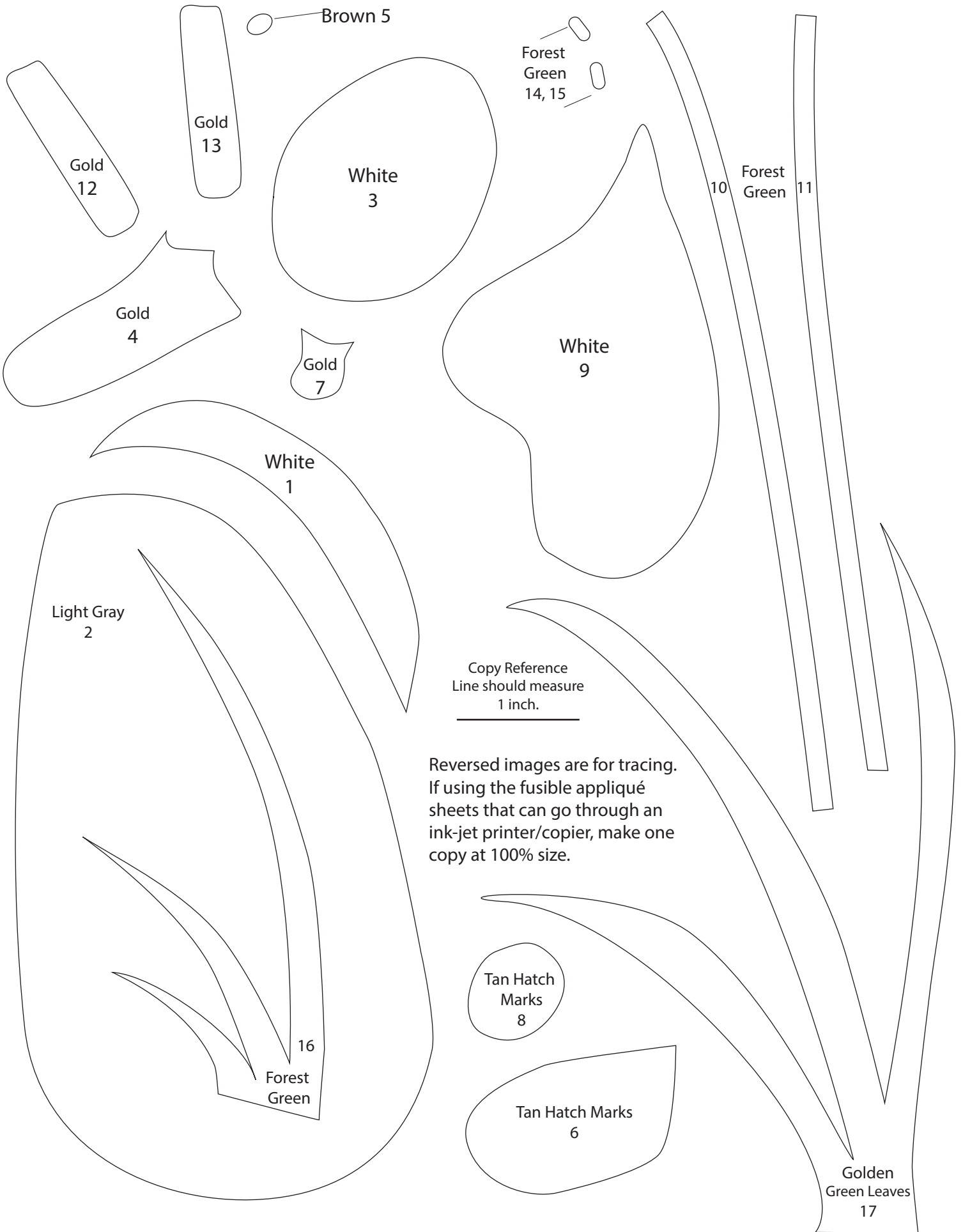
4.

5. With right sides together, layer the back rectangles onto the right side of the pillow with the raw edges along side of the raw edges of the quilted pillow top. Pin in place. Stitch 1/4" on all four sides of the quilted pillow top. Turn right side out and stuff with a 20" pillow insert.



5.

Look at that! I hope you're impressed with yourself!



Copy Reference
Line should measure
1 inch.

Reversed images are for tracing.
If using the fusible appliqué
sheets that can go through an
ink-jet printer/copier, make one
copy at 100% size.

